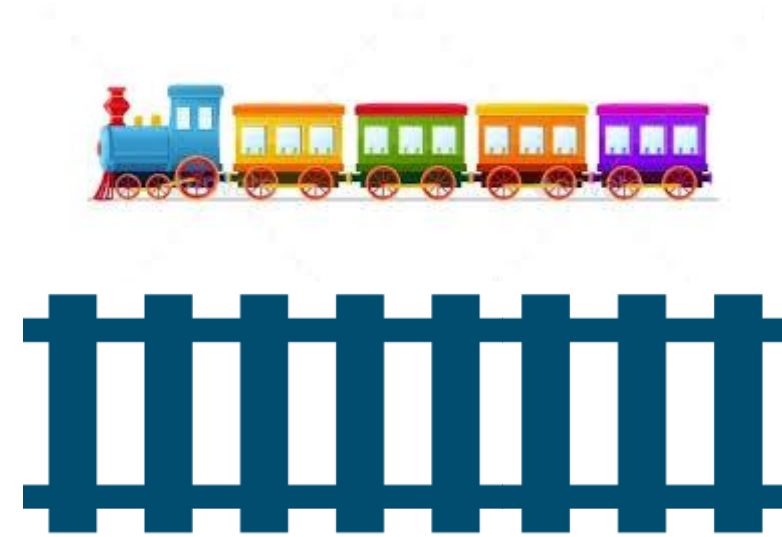




# Railway Safety



# QUICK QUIZ...



# Which of the Following Do You Think is the Fastest?

a. A car travelling on a motorway



b. A cheetah: the fastest animal on earth



c. A Great British train



# Which of the Following Do You Think is the Fastest?

a. A car travelling on a motorway



b. A cheetah: the fastest animal on earth



c. A Great British train



# How much do you think a train weighs- How Heavy is A Train?

- a. **120 tonnes**  
(that's the same weight as a **blue whale** – the largest mammal on Earth)



- b. **225 tonnes** (that's the same weight as the **Statue of Liberty** in New York)

- c. **400 tonnes**  
(that's the same weight as about **80 elephants**)



# How much do you think a train weighs- How Heavy is A Train?

- a. **120 tonnes**  
(that's the same weight as a **blue whale** – the largest mammal on Earth)



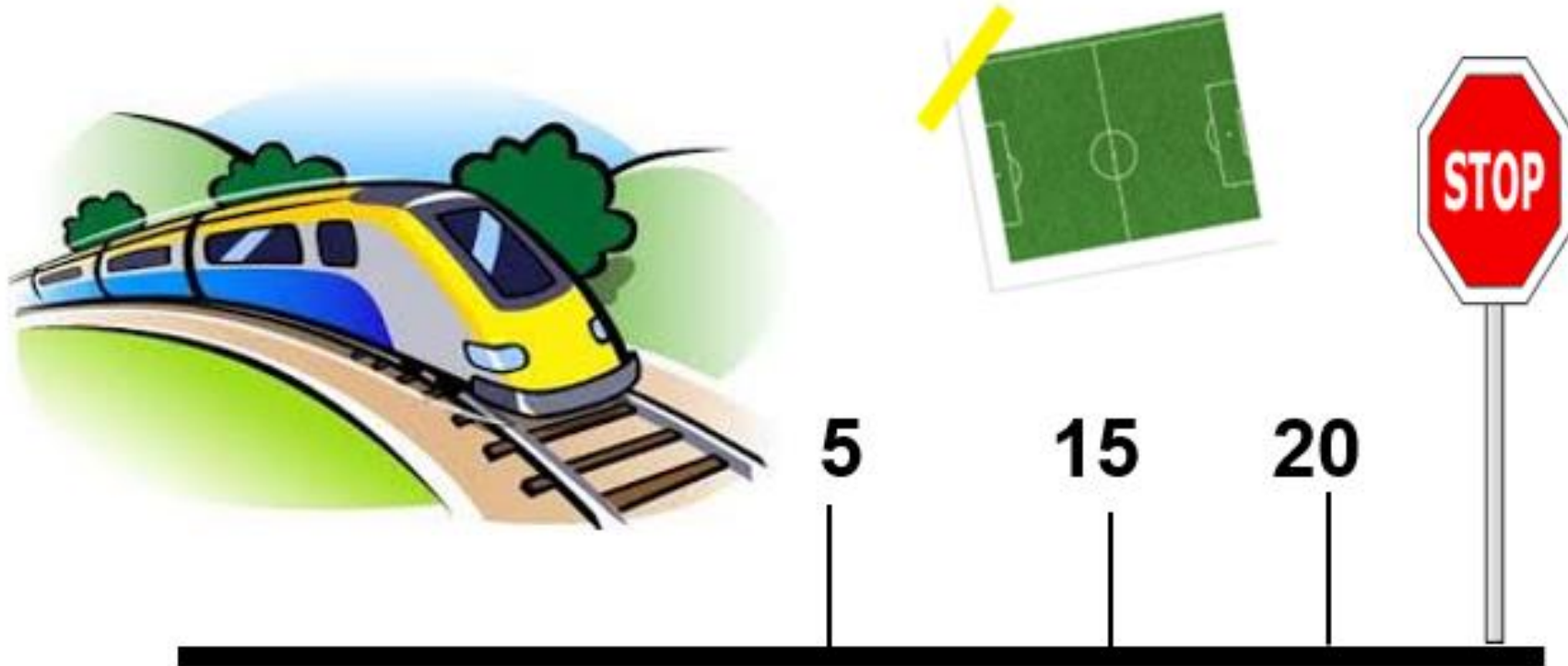
- b. **225 tonnes** (that's the same weight as the **Statue of Liberty** in New York)

- c. **400 tonnes**  
(that's the same weight as about **80 elephants**)

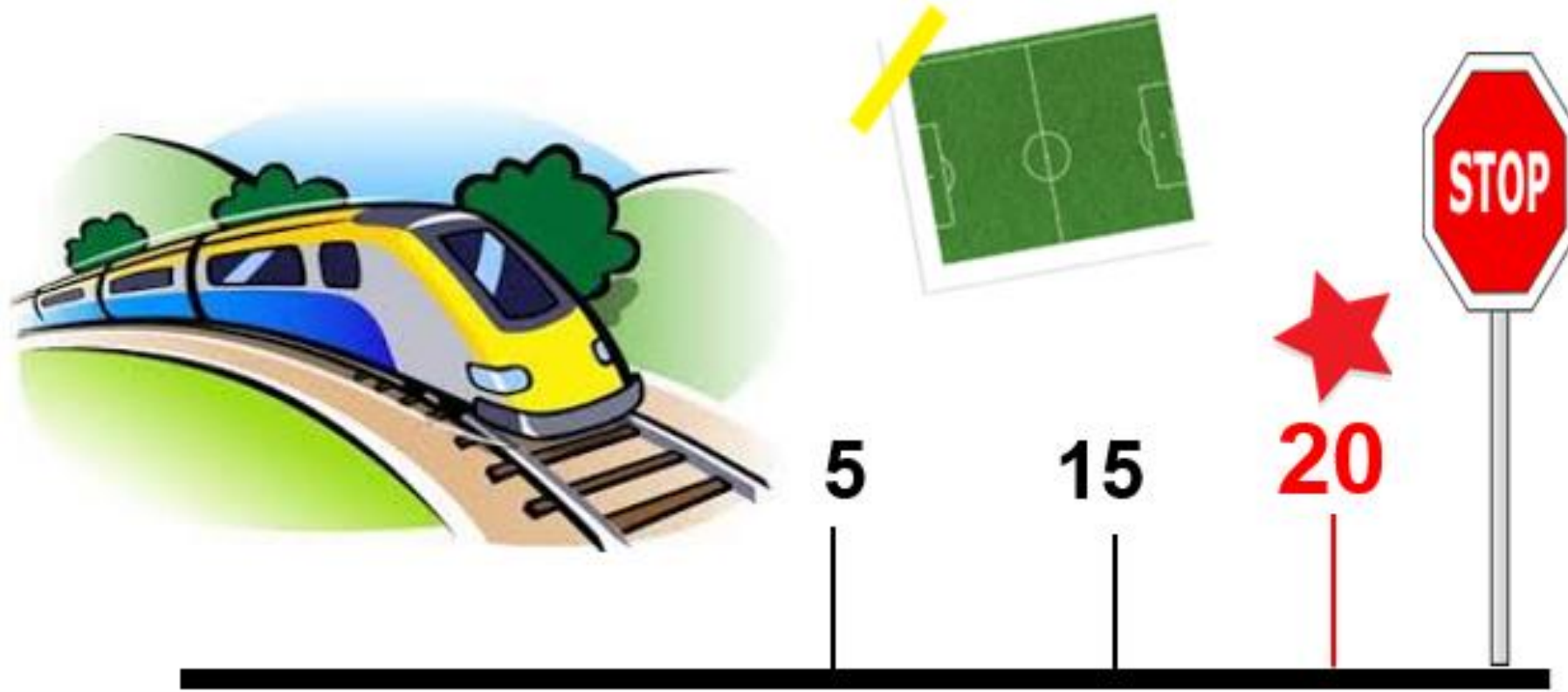




When a train brakes, how far will it travel before it comes to a stop?



When a train brakes, how far will it travel before it comes to a stop?





# STAY OFF THE TRACKS... YOU WILL GET CAUGHT!



A train can't just stop suddenly...it takes up to the length of 20 football pitches to stop... it **doesn't have a steering wheel** so can't steer out of the way... you must **NEVER** go anywhere near the railway tracks – it is dangerous!





# British Transport Police



**BRITISH  
TRANSPORT  
POLICE**





Trespassing on the Railway IS **ALWAYS A CRIME**-  
These are what we should be using in order to  
safely cross the Railway...

OFFICIAL



Discover the hidden dangers

**ELECTRICITY**  
can 'jump'  
3 metres and  
the  
Electricity is  
always switched  
on..

OVERHEAD  
LINES  
25,000 volts

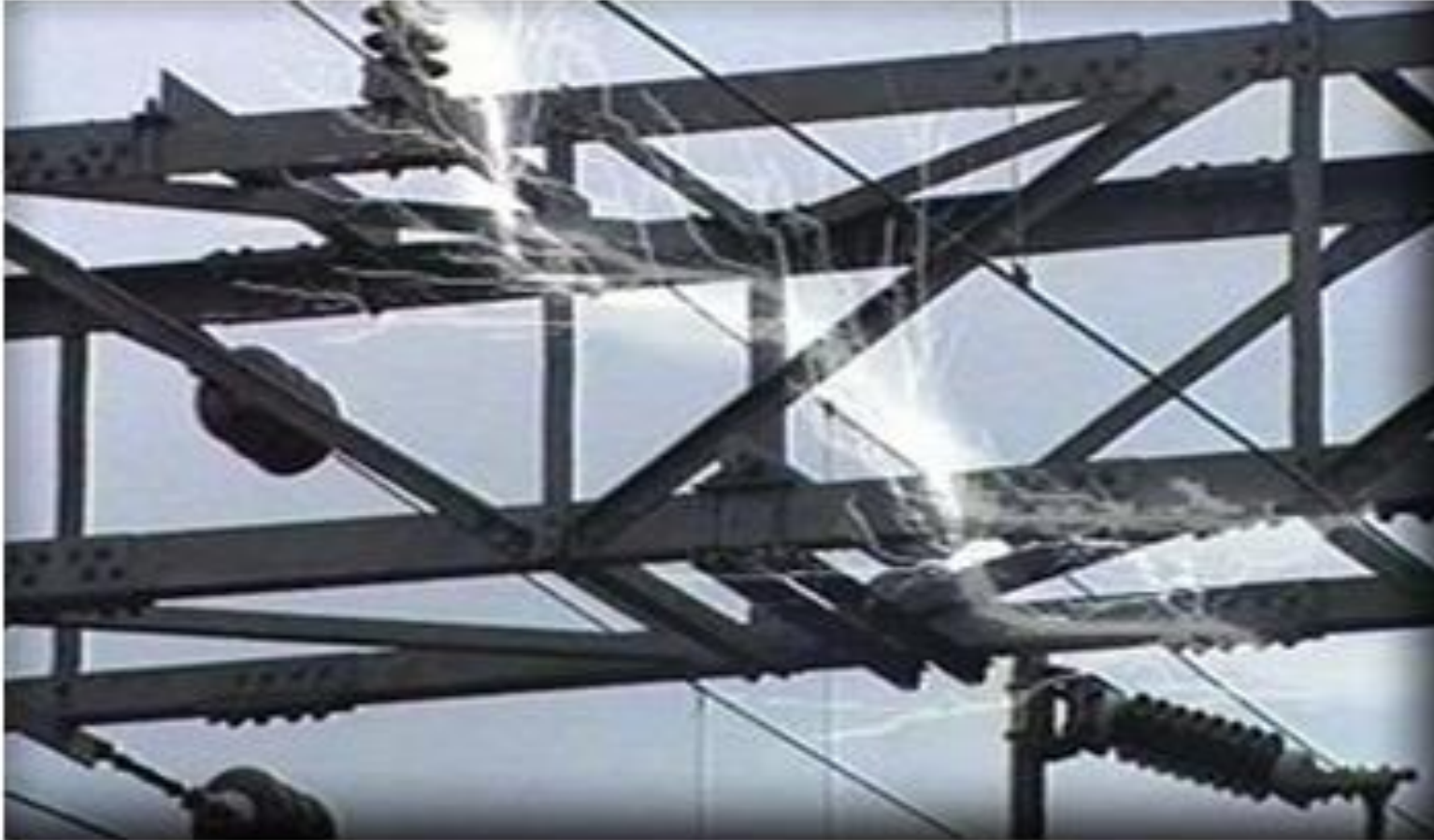
SIGNALING LOCATION  
CASE  
650 volts

BURIED  
CABLE  
25,000  
volts

3rd RAIL  
750 volts



# This is a picture of electricity jumping!



# How else can you keep safe on a platform?

- You must always stand BEHIND the yellow line whilst waiting for your train to keep safe.
- If you don't you could easily fall on to the track: it may be a frosty day and could be icy, there might be lots of people on the platform, you might accidentally drop your belongings on to the track!







**ONLY NETWORK RAIL  
AND AUTHORISED  
STAFF ARE ALLOWED  
ON THE TRACKS.**

**STAY OFF THE TRACKS**

**STAY OFF  
THE  
TRACKS**

**DON'T  
THROW  
ANYTHING  
AT TRAINS**



**DON'T PUT  
OBJECTS  
ON THE  
TRACK**

**STAND BEHIND  
THE YELLOW  
LINE**

**ELECTRICITY  
IS  
ALWAYS  
SWITCHED ON**



